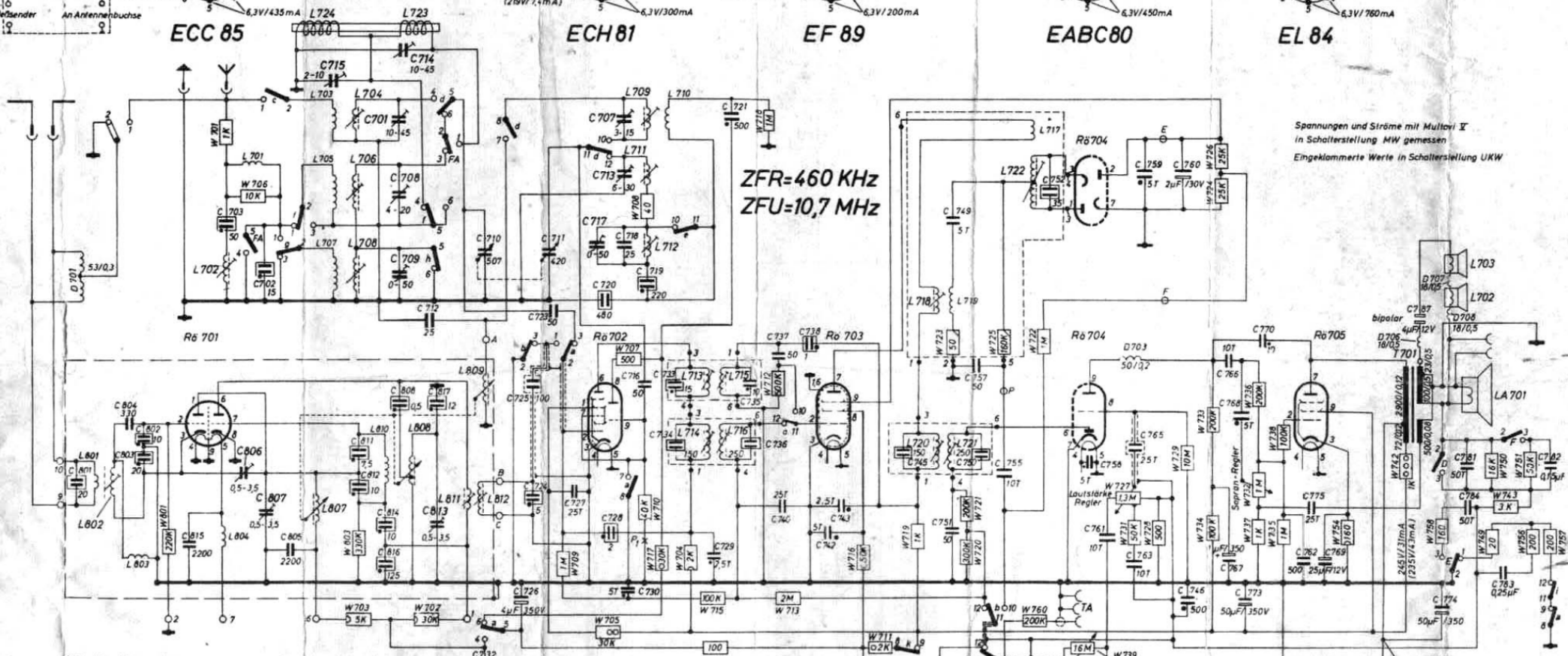
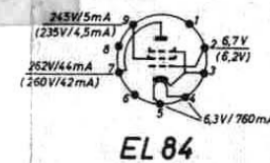
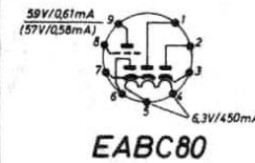
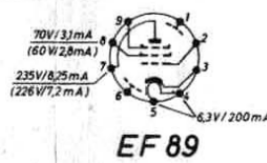
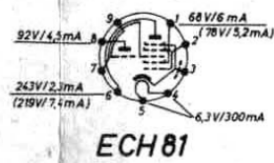
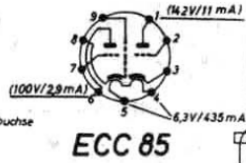
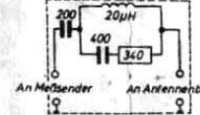
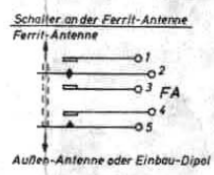
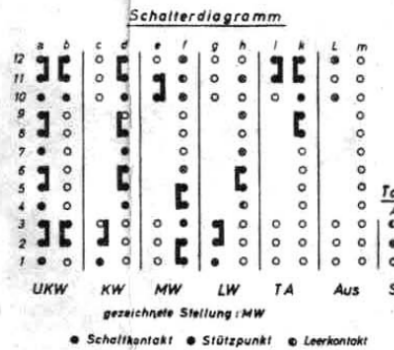


Int. Ersatzantenne nur für AM

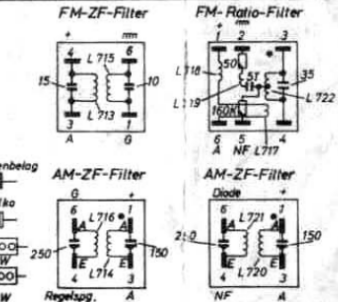


Spannungen und Ströme mit Multivolt \bar{I} in Schalterstellung MW gemessen
Eingeklammerte Werte in Schalterstellung UKW



Bereich	Schwingsstrom	gem. an
KW	130-210 µA	P1
MW	126-210 µA	P1
UKW	144-240 µA	P1

Die Anschlüsse der ZF Filter sind von unten gesehen.



BLAUPUNKT
Granada
2525

Änderungen vorbehalten!